



Where Our Innovations
Become Your Solutions



PROUD TO BE A 100% EMPLOYEE-OWNED COMPANY

Founded in 1998, Epsilon Systems provides total life-cycle support to defense systems and commercial enterprises, including:

- **Fleet sustainment, repair, and modernization** capabilities and facilities close to major U.S. Navy homeports
- Command, Control, Communications, Computers, Combat Systems and Intelligence support from the experienced engineers and intelligence professionals of **Epsilon C5I**
- Design and manufacture of **advanced products** that meet rigorous operational and reliability standards for both commercial and military applications
- **Enterprise solutions** and professional services such as comprehensive training programs, nuclear program support, environmental and range support, and EHS compliance software

epsilonsystems.com

Fleet Sustainment, Repair and Modernization

Gain the synergistic benefits of our capabilities and facilities close to major U.S. Navy homeports.

Over 500 Epsilon Systems employees support the repair and modernization of submarines, surface ships and aircraft carriers. We have over 125,000 square feet of repair and modernization facilities in Portsmouth, VA, San Diego, CA, Pearl Harbor, HI, and Mayport, FL.

- Shipyard and Field Services
- Ship Repair and Modernization Projects
- Industrial Electrical
- Motor Rewind Services

Qualifications/Certifications

- NAVSEA Awarded Master Ship Repair Agreement (MSRA)
- NAVSEA Awarded Agreement for Boat Repair (ABR)
- ISO 9001:2015 Compliant Quality Management System
- NAVSEA NOTE 5000 Qualification for SUBSAFE Certification Provider
- NAVSEA Qualified Corporate Component Repair Program Provider (including SUBSAFE assets)
- NAVSEA and ABS Approved Welding Provider
- NAVSEA Approved NDT VT, LPT, MT, UT (Thickness) Provider
- Sealed Insulation Systems (SIS) Certification

Command, Control, Communications, Computers, Combat Systems and Intelligence (C5I)

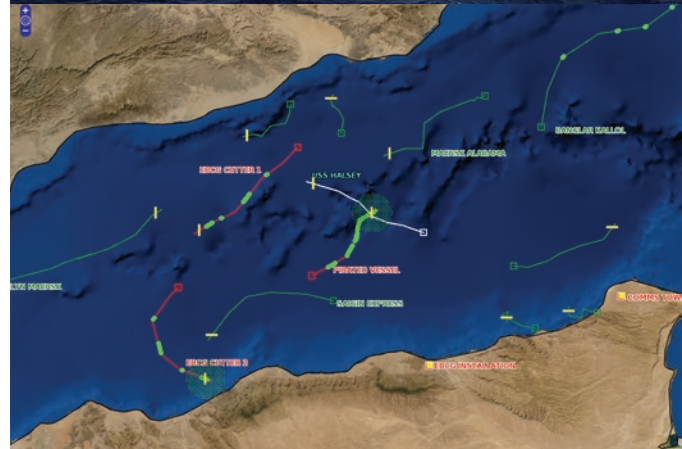
Epsilon C5I, Inc. (formerly KAB Labs) is a wholly-owned subsidiary of Epsilon Systems. Our C5I team delivers software development, systems engineering and cybersecurity to intelligence systems, combat systems and IT that support rapid and accurate decision-making. Epsilon C5I is a trusted provider of high-end engineering products and services to IC, DoD and commercial clients for over 30 years. C5I has over 100 DoD-cleared employees, the majority of whom are cleared up to TS/SCI. Our products include:

- **Signals Analysis Tools** for acquisition, analysis, emitter identification, radio fingerprinting and monitoring of the electromagnetic spectrum.
- **Intelligence and Analysis Tools** that support multi-INT fusion, and simulation/stimulation of intelligence and C2 systems.
- **DevOps Tools** that provide realistic and repeatable scenario-driven testing for improved software quality and delivery.
- **Cyber Awareness Tools** that improve automated monitoring of your network.



CMMIDEV/3SM
CMMI®V2.0 / Exp. 2024-11-19 / Appraisal #56830

epsilonsystems.com



Advanced Products

Epsilon Systems designs and manufactures products for commercial and military applications. Our extensive capabilities include prototype design, and electrical and mechanical engineering services.

Lightweight Ground Support Equipment (GSE)

- Compact Aircraft Support Cart (CASC)
- Aircraft Oxygen Servicing Carts (O2 Carts)

Rugged Flat Panel Displays (RFPDs)

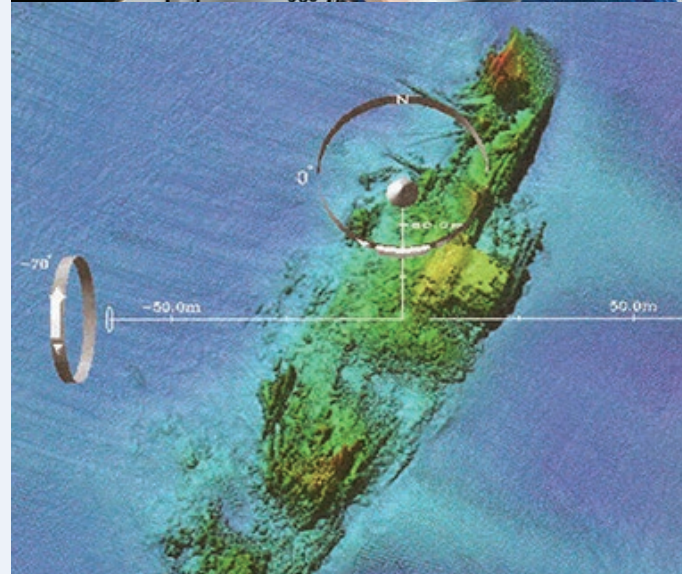
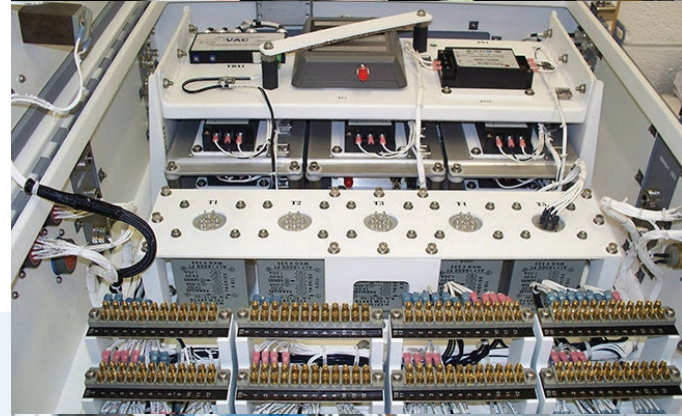
Our RFPDs, from 10.4 to 24 inches, meet rigorous requirements including, noise, shock, vibration, EMI/EMC and interface power.

Additional Products and Services

- Aircraft Launch and Recovery Equipment (ALRE) and Support Equipment (SE) for NAVAIR
- Electronic Rack Mounted Equipment and Consoles
- Electrical and Mechanical Engineering
- Custom Training Equipment
- SOLIDWORKS Modeling

Certifications

ISO 9001:2015 Full Design Quality Management System



Enterprise Solutions

Technical Solutions – We have several hundred technicians supporting Navy Regional Maintenance Centers and a variety of Fleet sponsored programs.

Professional Solutions – Epsilon Systems provides engineering services and professional support services to a variety of Navy Fleet and SYSCOM commands.

Learning Solutions – Our Epsilon XR division is a results-driven team of professionals creating complete training solutions using the latest technologies including simulation and virtual reality.



Software Solutions – We employ the latest tools and techniques to effectively manage the entire software development life cycle.

Nuclear Program Support – Epsilon Systems provides nuclear and industrial facility operational services to a range of DOE and NNSA customers.

Environmental and Range Support – We offer decades of experience in environmental site investigation, management activities and regulatory compliance.

Environmental, Health and Safety Software – EHSdesk™ is a fully integrated information management solution that facilitates any size organization in meeting their EHS goals and objectives. A recently added module helps HR and safety professionals manage virus-related data.

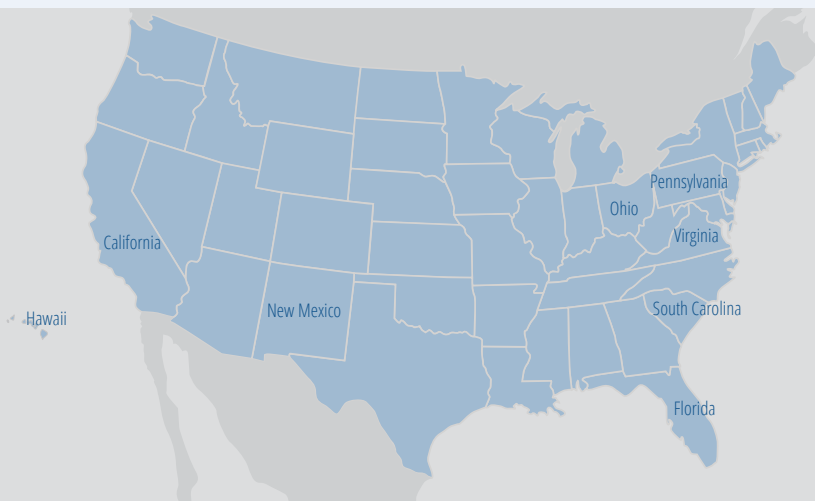


Fast Facts About Epsilon Systems

- Large professional and technical services company
 - Corporate office in San Diego, California
 - Over 20 U.S. locations
 - Revenue greater than \$195M
- An employee-owned business founded in 1998
- Workforce of more than 1,000 skilled professionals
 - Scientists / Engineers
 - Technical Specialists
 - Skilled Artisans
- Primarily serving federal government customers
 - Department of Defense: Air Force, Army and Navy
 - Department of Homeland Security
 - Department of Energy

Corporate Office

9444 Balboa Avenue, Suite 100
San Diego, CA 92123
619-702-1700
info@epsilonsystems.com



epsilonsystems.com



Our Values



People

Put people first by treating them with dignity and respect.



Integrity

Ensure unwavering application of our values and ethics through honesty, openness and accountability.



Excellence

Deliver excellent results with a commitment to quality.



Customer

Make our customers successful by understanding their needs and delivering the right product or service in a responsive manner.



Fun

Create a fun environment and foster a unified team spirit.



Innovation

Embrace diversity, creativity, new ideas, and an entrepreneurial spirit.



Nimble

Encourage flexibility and quick actions while empowering decision making at all levels.



Community

Support and give back to the communities in which we live and work.